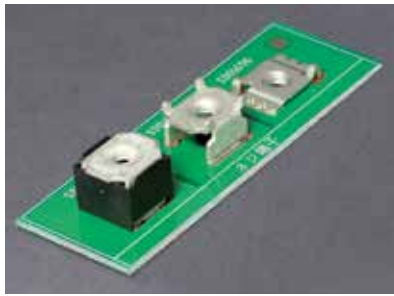


SD Powerelemente

Merkmale

- mit M3- oder M4-Innengewinde
- für SMT-Bestückung
- Materialstärke: 0,8 mm, 1,0 mm oder 1,6 mm
- Material: Messing verzinkt

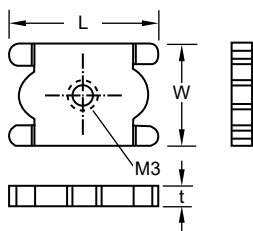


! **Strombelastbarkeit**

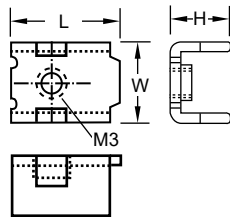
| | |
|----|------|
| M3 | 15 A |
| M4 | 40 A |

Abmessungen ► Einheit = mm

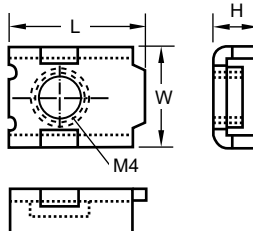
SD01312-2G



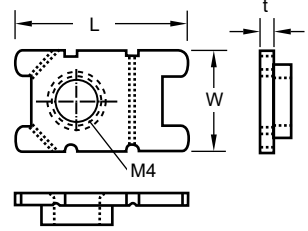
SD01373-2K



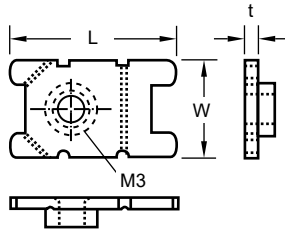
SD01380-2K



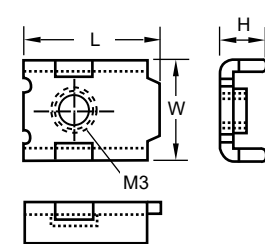
SD01382-2K



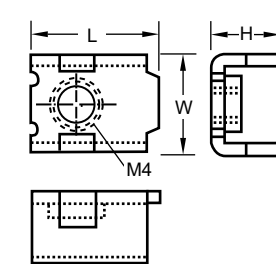
SD01386-2K



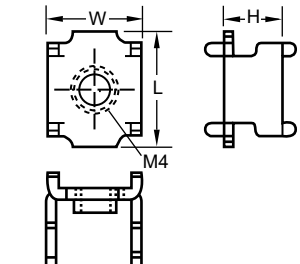
SD01409-2K



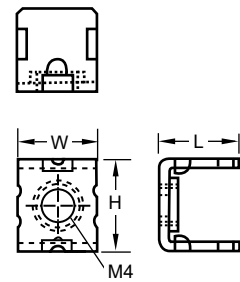
SD01410-2K



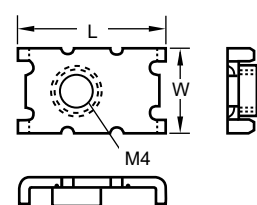
SD01656-2K



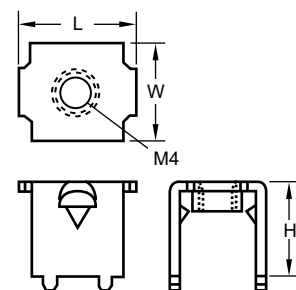
SD01674-2K



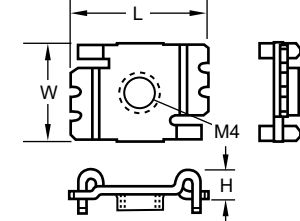
SD01680-2K



SD01689-2K



SD01696-2K



| Typ | Gewindegröße | L (mm) | W (mm) | H (mm) | Materialstärke (mm) | VPE (Stck) |
|------------|--------------|--------|--------|--------|---------------------|------------|
| SD01312-2G | M3 | 12,0 | 8,0 | - | 1,6 | 1.000 |
| SD01373-2K | M3 | 11,0 | 8,0 | 6,0 | 1,0 | 1.000 |
| SD01380-2K | M4 | 11,0 | 8,0 | 3,6 | 1,0 | 1.500 |
| SD01382-2K | M4 | 14,0 | 8,0 | - | 1,0 | 1.000 |
| SD01386-2K | M3 | 14,0 | 8,0 | - | 1,0 | 1.000 |
| SD01409-2K | M3 | 11,0 | 8,0 | 3,6 | 1,0 | 1.500 |
| SD01410-2K | M4 | 11,0 | 8,0 | 6,0 | 1,0 | 1.000 |
| SD01656-2K | M4 | 12,4 | 10,2 | 8,5 | 1,0 | 400 |
| SD01674-2K | M4 | 8,0 | 8,0 | 9,0 | 0,8 | 400 |
| SD01680-2K | M4 | 14,4 | 8,0 | - | 1,0 | 1.500 |
| SD01689-2K | M4 | 12,4 | 10,2 | 10,0 | 1,0 | 400 |
| SD01696-2K | M4 | 14,5 | 10,2 | 3,0 | 0,8 | 1.000 |