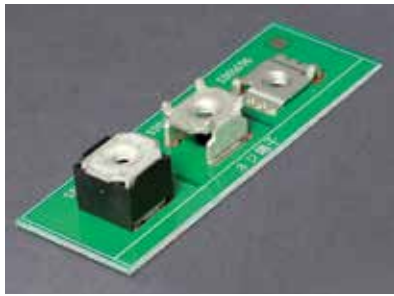


# SD Powerelemente

## Merkmale

- mit M3- oder M4-Innengewinde
- für SMT-Bestückung
- Materialstärke: 0,8 mm, 1,0 mm oder 1,6 mm
- Material: Messing verzinkt

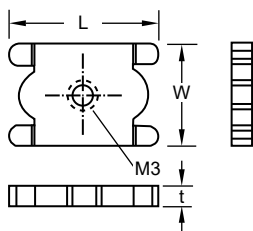


**!** **Strombelastbarkeit**

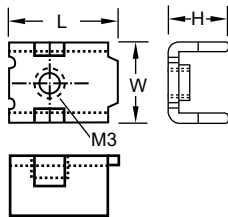
M3	15 A
M4	40 A

Abmessungen ► Einheit = mm

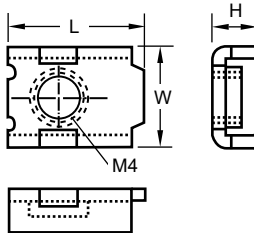
**SD01312-2G**



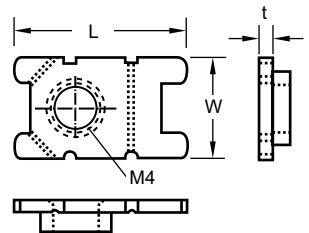
**SD01373-2K**



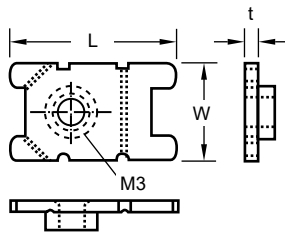
**SD01380-2K**



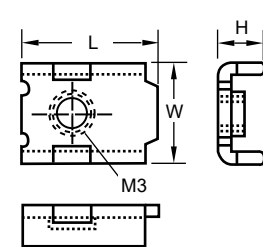
**SD01382-2K**



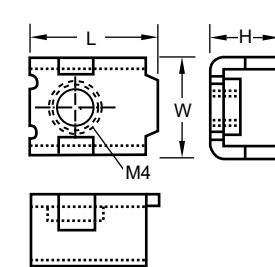
**SD01386-2K**



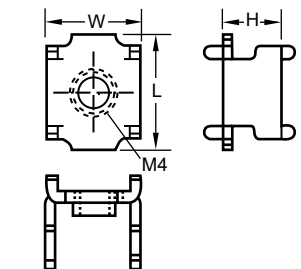
**SD01409-2K**



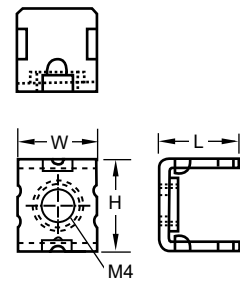
**SD01410-2K**



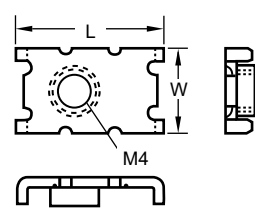
**SD01656-2K**



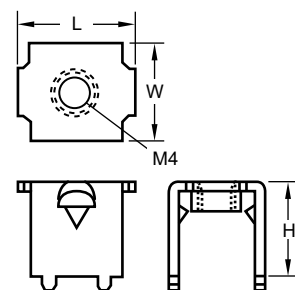
**SD01674-2K**



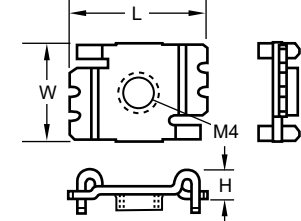
**SD01680-2K**



**SD01689-2K**



**SD01696-2K**



Typ	Gewindegröße	L (mm)	W (mm)	H (mm)	Materialstärke (mm)	VPE (Stck)
SD01312-2G	M3	12,0	8,0	-	1,6	1.000
SD01373-2K	M3	11,0	8,0	6,0	1,0	1.000
SD01380-2K	M4	11,0	8,0	3,6	1,0	1.500
SD01382-2K	M4	14,0	8,0	-	1,0	1.000
SD01386-2K	M3	14,0	8,0	-	1,0	1.000
SD01409-2K	M3	11,0	8,0	3,6	1,0	1.500
SD01410-2K	M4	11,0	8,0	6,0	1,0	1.000
SD01656-2K	M4	12,4	10,2	8,5	1,0	400
SD01674-2K	M4	8,0	8,0	9,0	0,8	400
SD01680-2K	M4	14,4	8,0	-	1,0	1.500
SD01689-2K	M4	12,4	10,2	10,0	1,0	400
SD01696-2K	M4	14,5	10,2	3,0	0,8	1.000