

PE-FPR Powerelemente

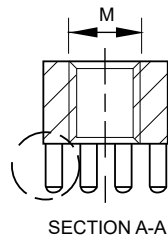
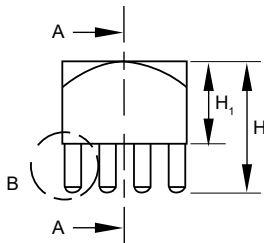


Merkmale

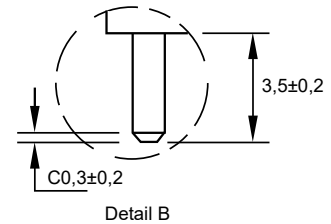
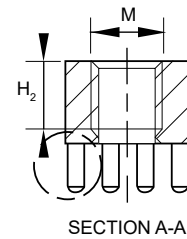
- zum Einpressen in die Leiterplatte.
Es können Ströme bis 340A übertragen werden.
- Material: Messing verzinkt
- andere Größen und Ausführungen auf Anfrage

Abmessungen ► Einheit = mm

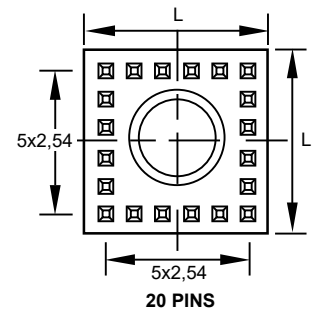
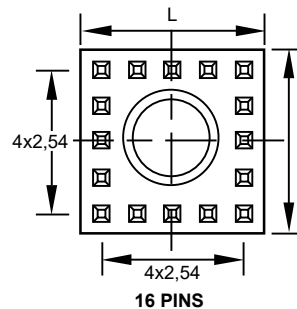
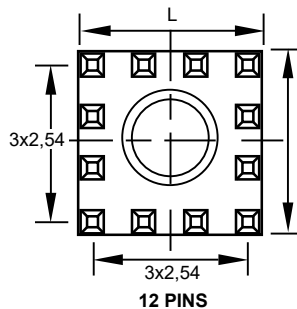
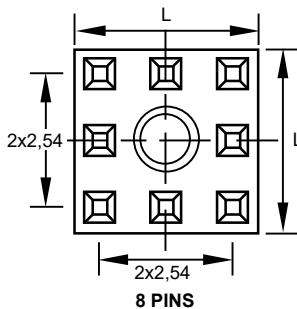
mit Durchgangsgewinde



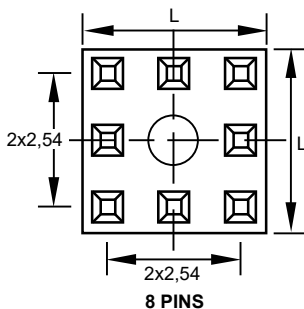
kein Durchgangsgewinde



mit Durchgangsgewinde



kein Durchgangsgewinde



Technische Daten

Eigenschaften

| | |
|---------------------|--------------------|
| Material | Messing |
| Oberfläche | verzinkt |
| Bohrlochdurchmesser | 1,6 mm |
| Endlochdurchmesser | 1,475 mm |
| Hitzebeständigkeit | -55 °C bis +150 °C |
| Auszugskraft | nach IEC 352-5 |

| Art.-Nr. | Typ | M | H (mm) | H ₁ (mm) | H ₂ (mm) | L (mm) | Anzahl Pins | IR (A) | Anzugsdrehmoment |
|----------------|-----------------|------|--------|---------------------|---------------------|--------|-------------|--------|------------------|
| 304 25 060 FPR | PE-FPR-M2,5x6,0 | M2,5 | 9,5 | 6,0 | - | 7,0 | 8 | 130 | 0,29Nm |
| 304 25 065 FPR | PE-FPR-M2,5x6,0 | M2,5 | 9,5 | 6,0 | 5,0 | 7,0 | 8 | 130 | 0,29Nm |
| 304 04 060 FPR | PE-FPR-M4x6,0 | M4 | 9,5 | 6,0 | - | 9,0 | 12 | 175 | 1,2Nm |
| 304 05 060 FPR | PE-FPR-M5x6,0 | M5 | 9,5 | 6,0 | - | 9,0 | 12 | 175 | 2,5Nm |
| 304 05 111 FPR | PE-FPR-M5x11,1 | M5 | 14,6 | 11,1 | - | 9,0 | 12 | 175 | 2,2Nm |
| 304 06 135 FPR | PE-FPR-M6x13,5 | M6 | 17,0 | 13,5 | - | 13,0 | 16 | 240 | 3,9Nm |
| 304 08 130 FPR | PE-FPR-M8x13,0 | M8 | 17,0 | 13,5 | - | 13,0 | 16 | 340 | 9,0Nm |
| 304 08 160 FPR | PE-FPR-M8x16,0 | M8 | 17,0 | 13,5 | - | 16,0 | 20 | 340 | 9,0Nm |
| 304 10 175 FPR | PE-FPR-M10x17,5 | M10 | 21,0 | 17,5 | - | 16,0 | 20 | 340 | 17,0Nm |