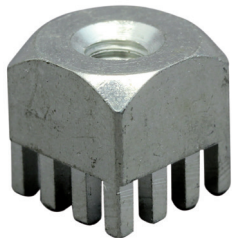


PE-FPR Powerelemente

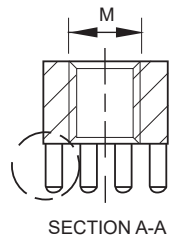
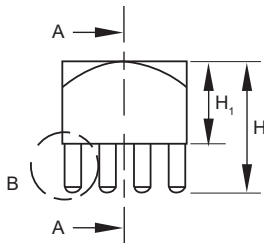


Merkmale

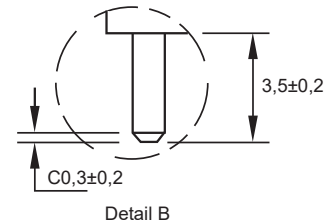
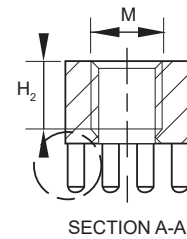
- zum Einpressen in die Leiterplatte.
Es können Ströme bis 340A übertragen werden.
- Material: Messing verzinkt
- andere Größen und Ausführungen auf Anfrage

Abmessungen ► Einheit = mm

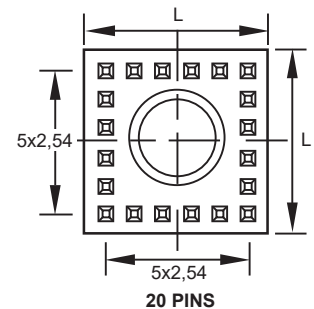
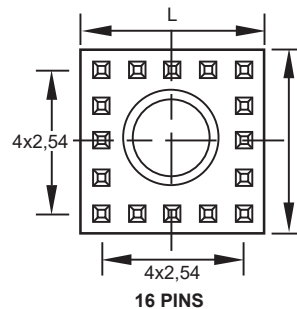
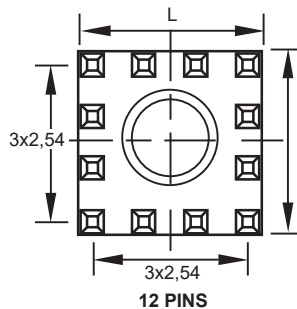
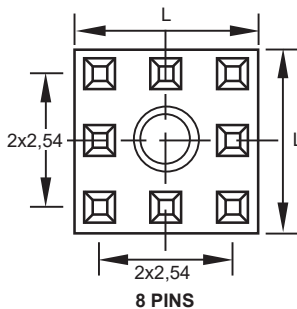
mit Durchgangsgewinde



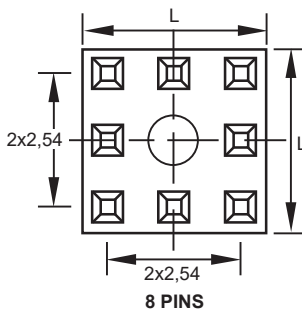
kein Durchgangsgewinde



mit Durchgangsgewinde



kein Durchgangsgewinde



Technische Daten

Eigenschaften

Material	Messing
Oberfläche	verzinkt
Bohrlochdurchmesser	1,6 mm
Endlochdurchmesser	1,475 mm
Hitzebeständigkeit	-55 °C bis +150 °C
Auszugskraft	nach IEC 352-5

Art.-Nr.	Typ	M	H (mm)	H ₁ (mm)	H ₂ (mm)	L (mm)	Anzahl Pins	IR (A)	Anzugsdrehmoment
304 25 060 FPR	PE-FPR-M2,5x6,0	M2,5	9,5	6,0	-	7,0	8	130	0,29Nm
304 25 065 FPR	PE-FPR-M2,5x6,0	M2,5	9,5	6,0	5,0	7,0	8	130	0,29Nm
304 04 060 FPR	PE-FPR-M4x6,0	M4	9,5	6,0	-	9,0	12	175	1,2Nm
304 05 060 FPR	PE-FPR-M5x6,0	M5	9,5	6,0	-	9,0	12	175	2,5Nm
304 05 111 FPR	PE-FPR-M5x11,1	M5	14,6	11,1	-	9,0	12	175	2,2Nm
304 06 135 FPR	PE-FPR-M6x13,5	M6	17,0	13,5	-	13,0	16	240	3,9Nm
304 08 130 FPR	PE-FPR-M8x13,0	M8	17,0	13,5	-	13,0	16	340	9,0Nm
304 08 160 FPR	PE-FPR-M8x16,0	M8	17,0	13,5	-	16,0	20	340	9,0Nm
304 10 175 FPR	PE-FPR-M10x17,5	M10	21,0	17,5	-	16,0	20	340	17,0Nm