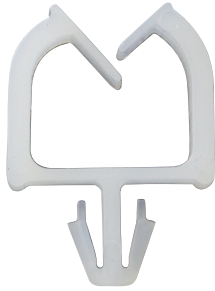


MWS Leitungshalter

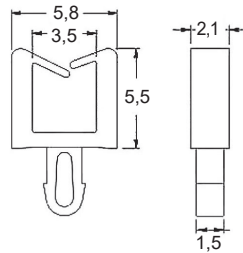


Merkmale

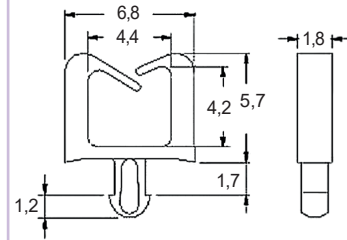
- mit Rastfuß
- Material: Nylon 66, UL94V-2 (V-0 auf Anfrage möglich)
- Farbe: natur

Abmessungen ► Einheit = mm

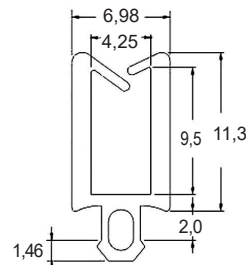
Art.-Nr. 222 14 10



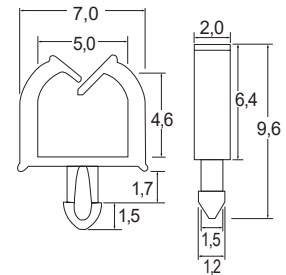
Art.-Nr. 222 14 14



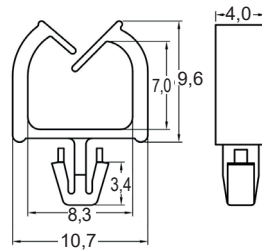
Art.-Nr. 222 14 13



Art.-Nr. 222 14 08



Art.-Nr. 222 14 15



Art.-Nr.	Typ	Loch-Ø (mm)	Plattenstärke (mm)
222 14 10	MWS-08	2,0	1,6 - 1,8
222 14 14	MWS-16	1,75	1,6
222 14 13	MWS-24	2,8	2,0
222 14 08	MWS-17	1,75	1,6
222 14 15	MWS-15	3,0	1,6

Weitere Abmessungen und Größen auf Anfrage, Tel.: 09852 61079-0