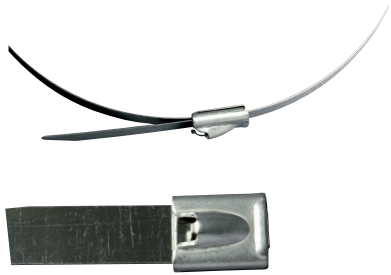


ESB-KV Edelstahlbinder



Merkmale

- mit Kugelverschluss
- beständig gegen hohe Temperaturen und Chemikalien, feuerfest
- Material: Edelstahl 304 (1.4301)

Art.-Nr.	Typ	Länge (mm)	Breite (mm)	max. Bündel-Ø (mm)	Zugkraft (kg)	VPE (Stck.)
208 46 125	ESB4,6x125KV	125,0	4,6	25,0	55,0	100
208 46 150	ESB4,6x150KV	150,0	4,6	44,0	55,0	100
208 46 200	ESB4,6x200KV	200,0	4,6	51,0	55,0	100
208 46 260	ESB4,6x260KV	260,0	4,6	69,0	55,0	100
208 46 290	ESB4,6x290KV	290,0	4,6	75,0	55,0	100
208 46 360	ESB4,6x360KV	360,0	4,6	102,0	55,0	100
208 46 520	ESB4,6x520KV	520,0	4,6	152,0	55,0	100
208 46 680	ESB4,6x680KV	680,0	4,6	203,0	55,0	50
208 46 840	ESB4,6x840KV	840,0	4,6	254,0	55,0	50
208 79 200	ESB7,9x200KV	200,0	7,9	51,0	120,0	100
208 79 290	ESB7,9x290KV	290,0	7,9	75,0	120,0	100
208 79 360	ESB7,9x360KV	360,0	7,9	102,0	120,0	100
208 79 520	ESB7,9x520KV	520,0	7,9	152,0	120,0	100
208 79 680	ESB7,9x680KV	680,0	7,9	203,0	120,0	50
208 79 840	ESB7,9x840KV	840,0	7,9	254,0	120,0	50
208 12 360	ESB12,3x360KV	360,0	12,3	51,0	220,0	100
208 12 520	ESB12,3x520KV	520,0	12,3	102,0	220,0	100
208 12 680	ESB12,3x680KV	680,0	12,3	152,0	220,0	50
208 12 840	ESB12,3x840KV	840,0	12,3	203,0	220,0	50