

# DIN963 Senkkopfschrauben

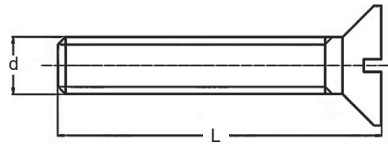


## Merkmale

- Senkkopf mit Schlitz ähnlich DIN963
- Material: Polyamid 6.6
- Farbe: natur

## Abmessungen

► Einheit = mm



Art.-Nr.	d (mm)	L (mm)
145 03 05 PA	M3	5,0
145 03 06 PA	M3	6,0
145 03 08 PA	M3	8,0
145 03 10 PA	M3	10,0
145 03 12 PA	M3	12,0
145 03 16 PA	M3	16,0
145 03 20 PA	M3	20,0
145 03 25 PA	M3	25,0
145 03 30 PA	M3	30,0
145 04 06 PA	M4	6,0
145 04 08 PA	M4	8,0
145 04 10 PA	M4	10,0
145 04 12 PA	M4	12,0
145 04 16 PA	M4	16,0
145 04 20 PA	M4	20,0
145 04 25 PA	M4	25,0
145 04 30 PA	M4	30,0
145 04 35 PA	M4	35,0
145 04 40 PA	M4	40,0
145 05 08 PA	M5	8,0
145 05 10 PA	M5	10,0
145 05 12 PA	M5	12,0
145 05 16 PA	M5	16,0
145 05 20 PA	M5	20,0
145 05 25 PA	M5	25,0
145 05 30 PA	M5	30,0
145 05 35 PA	M5	35,0
145 05 40 PA	M5	40,0

Art.-Nr.	d (mm)	L (mm)
145 05 50 PA	M5	50,0
145 06 10 PA	M6	10,0
145 06 16 PA	M6	16,0
145 06 20 PA	M6	20,0
145 06 25 PA	M6	25,0
145 06 30 PA	M6	30,0
145 06 35 PA	M6	35,0
145 06 40 PA	M6	40,0
145 06 50 PA	M6	50,0
145 06 60 PA	M6	60,0
145 08 10 PA	M8	10,0
145 08 16 PA	M8	16,0
145 08 20 PA	M8	20,0
145 08 25 PA	M8	25,0
145 08 30 PA	M8	30,0
145 08 35 PA	M8	35,0
145 08 40 PA	M8	40,0
145 08 50 PA	M8	50,0
145 08 60 PA	M8	60,0
145 08 70 PA	M8	70,0
145 10 16 PA	M10	16,0
145 10 20 PA	M10	20,0
145 10 25 PA	M10	25,0
145 10 30 PA	M10	30,0
145 10 35 PA	M10	35,0
145 10 40 PA	M10	40,0
145 10 50 PA	M10	50,0

Weitere Abmessungen und Farben auf Anfrage, Tel.: 09852 61079-0