

AB-IA-M3 - SW5,5 Abstandsbolzen

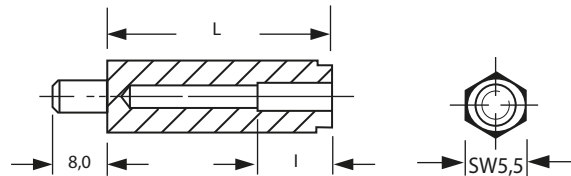


Merkmale

- 6-kant Abstandsbolzen mit M3 Innen-/ Außengewinde
- Schlüsselweite (SW) 5,5
- Material: Polyamid 6.6, UL94HB
- Farbe: schwarz
- temperaturbeständig bis ca. +110 °C

Abmessungen

► Einheit = mm



Art.-Nr.	L (mm)
100 75 05	5,0
100 75 06	6,0
100 75 07	7,0
100 75 08	8,0
100 75 09	9,0
100 75 10	10,0
100 75 11	11,0
100 75 12	12,0
100 75 13	13,0
100 75 14	14,0
100 75 15	15,0
100 75 16	16,0
100 75 17	17,0
100 75 18	18,0
100 75 19	19,0
100 75 20	20,0
100 75 21	21,0
100 75 22	22,0
100 75 23	23,0
100 75 24	24,0
100 75 25	25,0
100 75 26	26,0
100 75 27	27,0
100 75 28	28,0
100 75 29	29,0
100 75 30	30,0
100 75 31	31,0
100 75 32	32,0
100 75 33	33,0

Art.-Nr.	L (mm)
100 75 34	34,0
100 75 35	35,0
100 75 36	36,0
100 75 37	37,0
100 75 38	38,0
100 75 39	39,0
100 75 40	40,0
100 75 41	41,0
100 75 42	42,0
100 75 43	43,0
100 75 44	44,0
100 75 45	45,0
100 75 46	46,0
100 75 47	47,0
100 75 48	48,0
100 75 49	49,0
100 75 50	50,0
100 75 51	51,0
100 75 52	52,0
100 75 53	53,0
100 75 54	54,0
100 75 55	55,0
100 75 56	56,0
100 75 57	57,0
100 75 58	58,0
100 75 59	59,0
100 75 60	60,0
100 75 61	61,0



L		I		L		I	
6-kt-Länge	Innengewindetiefe	6-kt-Länge	Innengewindetiefe	6-kt-Länge	Innengewindetiefe	6-kt-Länge	Innengewindetiefe
5,0 mm	3,0 mm	8,0 mm	6,0 mm	11,0 mm	9,0 mm		
6,0 mm	4,0 mm	9,0 mm	7,0 mm	ab 12,0 mm	10,0 mm		
7,0 mm	5,0 mm	10,0 mm	8,0 mm				

Weitere Abmessungen und Größen auf Anfrage, Tel.: 09852 61079-0

