

AB-IA-M5 - SW10 Abstandsbolzen

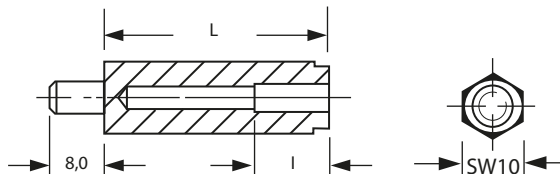


Merkmale

- 6-kant Abstandsbolzen mit M5 Innen-/ Außengewinde
- Schlüsselweite (SW) 10
- Material: Polyamid 6.6, UL94HB
- Farbe: schwarz
- temperaturbeständig bis ca. +110 °C

Abmessungen

► Einheit = mm



Art.-Nr.	L (mm)
100 32 08	8,0
100 32 09	9,0
100 32 10	10,0
100 32 11	11,0
100 32 12	12,0
100 32 13	13,0
100 32 14	14,0
100 32 15	15,0
100 32 16	16,0
100 32 17	17,0
100 32 18	18,0
100 32 19	19,0
100 32 20	20,0
100 32 21	21,0
100 32 22	22,0
100 32 23	23,0
100 32 24	24,0
100 32 25	25,0
100 32 26	26,0
100 32 27	27,0
100 32 28	28,0
100 32 29	29,0
100 32 30	30,0
100 32 31	31,0
100 32 32	32,0
100 32 33	33,0
100 32 34	34,0
100 32 35	35,0
100 32 36	36,0

Art.-Nr.	L (mm)
100 32 37	37,0
100 32 38	38,0
100 32 39	39,0
100 32 40	40,0
100 32 41	41,0
100 32 42	42,0
100 32 43	43,0
100 32 44	44,0
100 32 45	45,0
100 32 46	46,0
100 32 47	47,0
100 32 48	48,0
100 32 49	49,0
100 32 50	50,0
100 32 51	51,0
100 32 52	52,0
100 32 53	53,0
100 32 54	54,0
100 32 55	55,0
100 32 56	56,0
100 32 57	57,0
100 32 58	58,0
100 32 59	59,0
100 32 60	60,0
100 32 61	61,0
100 32 62	62,0
100 32 63	63,0
100 32 64	64,0
100 32 65	65,0



L		I	
6-kt-Länge	Innengewindetiefe	6-kt-Länge	Innengewindetiefe
8,0 mm	6,0 mm	11,0 mm	9,0 mm
9,0 mm	7,0 mm	ab 12,0 mm	10,0 mm
10,0 mm	8,0 mm		

Weitere Abmessungen und Größen auf Anfrage, Tel.: 09852 61079-0

