

# AB-IA-M3 - SW6 Abstandsbolzen

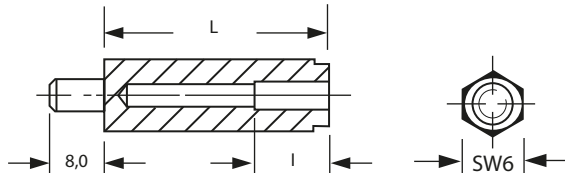


### Merkmale

- 6-kant Abstandsbolzen mit M3 Innen-/ Außengewinde
- Schlüsselweite (SW) 6
- Material: Polyamid 6.6, UL94HB
- Farbe: schwarz
- temperaturbeständig bis ca. +110°C

### Abmessungen

► Einheit = mm



Art.-Nr.	L (mm)
100 30 05	5,0
100 30 06	6,0
100 30 07	7,0
100 30 08	8,0
100 30 09	9,0
100 30 10	10,0
100 30 11	11,0
100 30 12	12,0
100 30 13	13,0
100 30 14	14,0
100 30 15	15,0
100 30 16	16,0
100 30 17	17,0
100 30 18	18,0
100 30 19	19,0
100 30 20	20,0
100 30 21	21,0
100 30 22	22,0
100 30 23	23,0
100 30 24	24,0
100 30 25	25,0
100 30 26	26,0
100 30 27	27,0
100 30 28	28,0
100 30 29	29,0
100 30 30	30,0
100 30 31	31,0
100 30 32	32,0
100 30 33	33,0

Art.-Nr.	L (mm)
100 30 34	34,0
100 30 35	35,0
100 30 36	36,0
100 30 37	37,0
100 30 38	38,0
100 30 39	39,0
100 30 40	40,0
100 30 41	41,0
100 30 42	42,0
100 30 43	43,0
100 30 44	44,0
100 30 45	45,0
100 30 46	46,0
100 30 47	47,0
100 30 48	48,0
100 30 49	49,0
100 30 50	50,0
100 30 51	51,0
100 30 52	52,0
100 30 53	53,0
100 30 54	54,0
100 30 55	55,0
100 30 56	56,0
100 30 57	57,0
100 30 58	58,0
100 30 59	59,0
100 30 60	60,0
100 30 61	61,0

L		I		L		I	
6-kt-Länge	Innengewindetiefe	6-kt-Länge	Innengewindetiefe	6-kt-Länge	Innengewindetiefe	6-kt-Länge	Innengewindetiefe
5,0 mm	3,0 mm	8,0 mm	6,0 mm	11,0 mm	9,0 mm		
6,0 mm	4,0 mm	9,0 mm	7,0 mm	ab 12,0 mm	10,0 mm		
7,0 mm	5,0 mm	10,0 mm	8,0 mm				

Weitere Abmessungen und Größen auf Anfrage, Tel.: 09852 61079-0