

AB-I-M6 - SW10 Abstandsbolzen

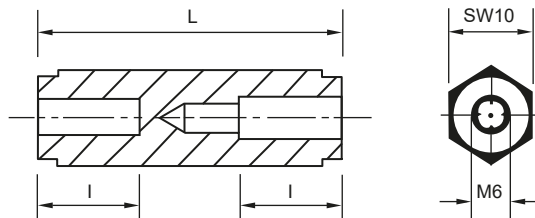


Merkmale

- 6-kant Abstandsbolzen mit 2 x Innengewinde M6
- Material: Polyamid 6.0 GV25, UL94HB
- Farbe: schwarz
- temperaturbeständig bis ca. +110°C

Abmessungen

► Einheit = mm



Art.-Nr.	L (mm)
100 27 04	4,0
100 27 05	5,0
100 27 06	6,0
100 27 07	7,0
100 27 08	8,0
100 27 09	9,0
100 27 10	10,0
100 27 11	11,0
100 27 12	12,0
100 27 13	13,0
100 27 14	14,0
100 27 15	15,0
100 27 16	16,0
100 27 17	17,0
100 27 18	18,0
100 27 19	19,0
100 27 20	20,0
100 27 21	21,0
100 27 22	22,0
100 27 23	23,0
100 27 24	24,0
100 27 25	25,0
100 27 26	26,0
100 27 27	27,0
100 27 28	28,0
100 27 29	29,0
100 27 30	30,0
100 27 31	31,0
100 27 32	32,0
100 27 33	33,0
100 27 34	34,0

Art.-Nr.	L (mm)
100 27 35	35,0
100 27 36	36,0
100 27 37	37,0
100 27 38	38,0
100 27 39	39,0
100 27 40	40,0
100 27 41	41,0
100 27 42	42,0
100 27 43	43,0
100 27 44	44,0
100 27 45	45,0
100 27 46	46,0
100 27 47	47,0
100 27 48	48,0
100 27 49	49,0
100 27 50	50,0
100 27 51	51,0
100 27 52	52,0
100 27 53	53,0
100 27 54	54,0
100 27 55	55,0
100 27 56	56,0
100 27 57	57,0
100 27 58	58,0
100 27 59	59,0
100 27 60	60,0
100 27 61	61,0
100 27 62	62,0
100 27 63	63,0
100 27 64	64,0
100 27 65	65,0

!	
L	I
6-kt-Länge	Innengewindetiefe
bis 20,0 mm	durchgehend
ab 21,0 mm	10,0 mm

Weitere Abmessungen und Größen auf Anfrage, Tel.: 09852 61079-0

