

AB-I-M5 - SW10 Abstandsbolzen

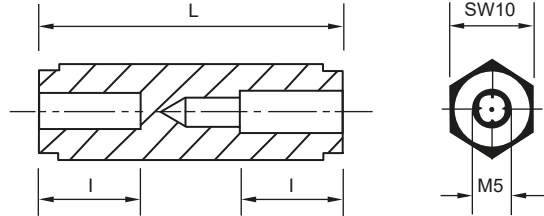


Merkmale

- 6-kant Abstandsbolzen mit 2 x Innengewinde M5
- Material: Polyamid 6.0 GV25, UL94HB
- Farbe: schwarz
- temperaturbeständig bis ca. +110 °C

Abmessungen

► Einheit = mm



| Art.-Nr. | L (mm) |
|-----------|--------|
| 100 26 04 | 4,0 |
| 100 26 05 | 5,0 |
| 100 26 06 | 6,0 |
| 100 26 07 | 7,0 |
| 100 26 08 | 8,0 |
| 100 26 09 | 9,0 |
| 100 26 10 | 10,0 |
| 100 26 11 | 11,0 |
| 100 26 12 | 12,0 |
| 100 26 13 | 13,0 |
| 100 26 14 | 14,0 |
| 100 26 15 | 15,0 |
| 100 26 16 | 16,0 |
| 100 26 17 | 17,0 |
| 100 26 18 | 18,0 |
| 100 26 19 | 19,0 |
| 100 26 20 | 20,0 |
| 100 26 21 | 21,0 |
| 100 26 22 | 22,0 |
| 100 26 23 | 23,0 |
| 100 26 24 | 24,0 |
| 100 26 25 | 25,0 |
| 100 26 26 | 26,0 |
| 100 26 27 | 27,0 |
| 100 26 28 | 28,0 |
| 100 26 29 | 29,0 |
| 100 26 30 | 30,0 |
| 100 26 31 | 31,0 |
| 100 26 32 | 32,0 |
| 100 26 33 | 33,0 |
| 100 26 34 | 34,0 |

| Art.-Nr. | L (mm) |
|-----------|--------|
| 100 26 35 | 35,0 |
| 100 26 36 | 36,0 |
| 100 26 37 | 37,0 |
| 100 26 38 | 38,0 |
| 100 26 39 | 39,0 |
| 100 26 40 | 40,0 |
| 100 26 41 | 41,0 |
| 100 26 42 | 42,0 |
| 100 26 43 | 43,0 |
| 100 26 44 | 44,0 |
| 100 26 45 | 45,0 |
| 100 26 46 | 46,0 |
| 100 26 47 | 47,0 |
| 100 26 48 | 48,0 |
| 100 26 49 | 49,0 |
| 100 26 50 | 50,0 |
| 100 26 51 | 51,0 |
| 100 26 52 | 52,0 |
| 100 26 53 | 53,0 |
| 100 26 54 | 54,0 |
| 100 26 55 | 55,0 |
| 100 26 56 | 56,0 |
| 100 26 57 | 57,0 |
| 100 26 58 | 58,0 |
| 100 26 59 | 59,0 |
| 100 26 60 | 60,0 |
| 100 26 61 | 61,0 |
| 100 26 62 | 62,0 |
| 100 26 63 | 63,0 |
| 100 26 64 | 64,0 |
| 100 26 65 | 65,0 |



| L | I |
|-------------|-------------------|
| 6-kt-Länge | Innengewindetiefe |
| bis 20,0 mm | durchgehend |
| ab 21,0 mm | 10,0 mm |

Weitere Abmessungen und Größen auf Anfrage, Tel.: 09852 61079-0

