

AB-I-M3 - SW7 Abstandsbolzen

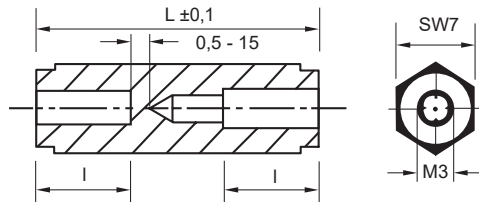


Merkmale

- 6-kant Abstandsbolzen mit 2 x Innengewinde M3
- Material: Polyamid 6.0 GV25, UL94HB
- Farbe: schwarz
- temperaturbeständig bis ca. +110 °C

Abmessungen

► Einheit = mm



Art.-Nr.	L (mm)
100 23 04	4,0
100 23 05	5,0
100 23 06	6,0
100 23 07	7,0
100 23 08	8,0
100 23 09	9,0
100 23 10	10,0
100 23 11	11,0
100 23 12	12,0
100 23 13	13,0
100 23 14	14,0
100 23 15	15,0
100 23 16	16,0
100 23 17	17,0
100 23 18	18,0
100 23 19	19,0
100 23 20	20,0
100 23 21	21,0
100 23 22	22,0
100 23 23	23,0
100 23 24	24,0
100 23 25	25,0
100 23 26	26,0
100 23 27	27,0
100 23 28	28,0
100 23 29	29,0
100 23 30	30,0
100 23 31	31,0
100 23 32	32,0
100 23 33	33,0
100 23 34	34,0

Art.-Nr.	L (mm)
100 23 35	35,0
100 23 36	36,0
100 23 37	37,0
100 23 38	38,0
100 23 39	39,0
100 23 40	40,0
100 23 41	41,0
100 23 42	42,0
100 23 43	43,0
100 23 44	44,0
100 23 45	45,0
100 23 46	46,0
100 23 47	47,0
100 23 48	48,0
100 23 49	49,0
100 23 50	50,0
100 23 51	51,0
100 23 52	52,0
100 23 53	53,0
100 23 54	54,0
100 23 55	55,0
100 23 56	56,0
100 23 57	57,0
100 23 58	58,0
100 23 59	59,0
100 23 60	60,0
100 23 61	61,0
100 23 62	62,0
100 23 63	63,0
100 23 64	64,0
100 23 65	65,0



L		I		L		I		L		I	
6-kt-Länge		Innengewindetiefe		6-kt-Länge		Innengewindetiefe		6-kt-Länge		Innengewindetiefe	
bis 15,0 mm		durchgehend		17,0 mm	8,0 mm	20,0 mm	9,5 mm				
16,0 mm		7,5 mm		18,0 mm	8,5 mm	ab 21,0 mm	10,0 mm				
				19,0 mm	9,0 mm						

Weitere Abmessungen und Größen auf Anfrage, Tel.: 09852 61079-0

