

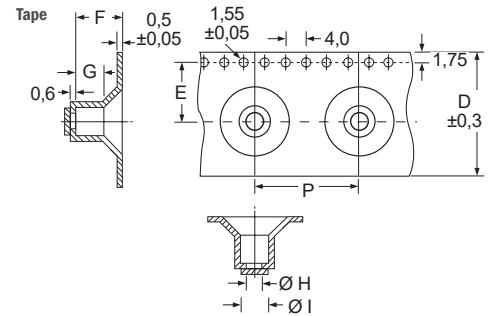
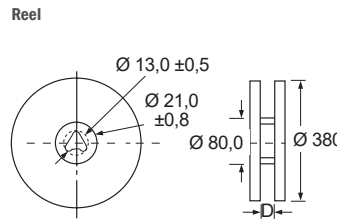
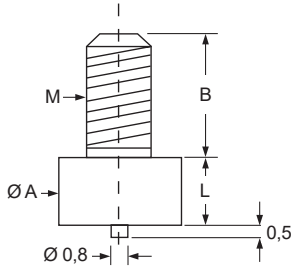
# AH-SMIA SMD-Abstandhalter



### Merkmale

- reflow-lötbar, Automaten bestückbar
- geeignet als Stromanschlusselement (bis 40A)
- Nennstrom M2: 10A, M3: 30A, M4: 40A
- Anzugsdrehmoment: M2 < 20 Ncm, M3 < 50 Ncm, M4 < 60 Ncm
- kleiner Zapfen an der Unterseite verhindert eine Fehlansrichtung beim Lötvorgang. Hierzu ist ein Ø 1 mm Loch auf der Leiterplatte notwendig.
- Material: Messing
- Oberfläche: verzinkt
- empfohlene Lötmitteldicke: 150 µm - 200 µm (bitte gleichmäßig auftragen)

Abmessungen ▶ Einheit = mm



| Art.-Nr.     | Typ            | M  | L (mm) | Ø A (mm) | B (mm) | Tape (mm) |      |      |     |     |     |      | Packeinheit  |
|--------------|----------------|----|--------|----------|--------|-----------|------|------|-----|-----|-----|------|--------------|
|              |                |    |        |          |        | D         | E    | F    | G   | H   | I   | P    |              |
| 096 250 010  | AH-SMIA-M2-1   | M2 | 1,0    | 4,0      | 5,0    | -         | -    | -    | -   | -   | -   | -    | 100 pcs/bulk |
| 096 250 010T | AH-SMIA-M2-1-T | M2 | 1,0    | 4,0      | 5,0    | 16,0      | 7,5  | 6,8  | 4,5 | 2,8 | 4,2 | 12,0 | 900 pcs/reel |
| 096 250 020  | AH-SMIA-M2-2   | M2 | 2,0    | 4,0      | 5,0    | -         | -    | -    | -   | -   | -   | -    | 100 pcs/bulk |
| 096 250 030  | AH-SMIA-M2-3   | M2 | 3,0    | 4,0      | 5,0    | -         | -    | -    | -   | -   | -   | -    | 100 pcs/bulk |
| 096 250 040  | AH-SMIA-M2-4   | M2 | 4,0    | 4,0      | 5,0    | -         | -    | -    | -   | -   | -   | -    | 100 pcs/bulk |
| 096 250 050  | AH-SMIA-M2-5   | M2 | 5,0    | 4,0      | 5,0    | -         | -    | -    | -   | -   | -   | -    | 100 pcs/bulk |
| 096 250 060  | AH-SMIA-M2-6   | M2 | 6,0    | 4,0      | 5,0    | -         | -    | -    | -   | -   | -   | -    | 100 pcs/bulk |
| 096 250 070  | AH-SMIA-M2-7   | M2 | 7,0    | 4,0      | 5,0    | -         | -    | -    | -   | -   | -   | -    | 100 pcs/bulk |
| 096 250 080  | AH-SMIA-M2-8   | M2 | 8,0    | 4,0      | 5,0    | -         | -    | -    | -   | -   | -   | -    | 100 pcs/bulk |
| 096 250 090  | AH-SMIA-M2-9   | M2 | 9,0    | 4,0      | 5,0    | -         | -    | -    | -   | -   | -   | -    | 100 pcs/bulk |
| 096 250 100  | AH-SMIA-M2-10  | M2 | 10,0   | 4,0      | 5,0    | -         | -    | -    | -   | -   | -   | -    | 100 pcs/bulk |
| 096 360 010  | AH-SMIA-M3-1   | M3 | 1,0    | 6,0      | 6,0    | -         | -    | -    | -   | -   | -   | -    | 100 pcs/bulk |
| 096 360 010T | AH-SMIA-M3-1-T | M3 | 1,0    | 6,0      | 6,0    | 24,0      | 11,5 | 8,2  | 5,5 | 4,0 | 6,2 | 16,0 | 600 pcs/reel |
| 096 360 020  | AH-SMIA-M3-2   | M3 | 2,0    | 6,0      | 6,0    | -         | -    | -    | -   | -   | -   | -    | 100 pcs/bulk |
| 096 360 020T | AH-SMIA-M3-2-T | M3 | 2,0    | 6,0      | 6,0    | 24,0      | 11,5 | 8,2  | 5,5 | 4,0 | 6,2 | 16,0 | 500 pcs/reel |
| 096 360 030  | AH-SMIA-M3-3   | M3 | 3,0    | 6,0      | 6,0    | -         | -    | -    | -   | -   | -   | -    | 100 pcs/bulk |
| 096 360 040  | AH-SMIA-M3-4   | M3 | 4,0    | 6,0      | 6,0    | -         | -    | -    | -   | -   | -   | -    | 100 pcs/bulk |
| 096 360 050  | AH-SMIA-M3-5   | M3 | 5,0    | 6,0      | 6,0    | -         | -    | -    | -   | -   | -   | -    | 100 pcs/bulk |
| 096 360 060  | AH-SMIA-M3-6   | M3 | 6,0    | 6,0      | 6,0    | -         | -    | -    | -   | -   | -   | -    | 100 pcs/bulk |
| 096 360 070  | AH-SMIA-M3-7   | M3 | 7,0    | 6,0      | 6,0    | -         | -    | -    | -   | -   | -   | -    | 100 pcs/bulk |
| 096 360 080  | AH-SMIA-M3-8   | M3 | 8,0    | 6,0      | 6,0    | -         | -    | -    | -   | -   | -   | -    | 100 pcs/bulk |
| 096 360 090  | AH-SMIA-M3-9   | M3 | 9,0    | 6,0      | 6,0    | -         | -    | -    | -   | -   | -   | -    | 100 pcs/bulk |
| 096 360 100  | AH-SMIA-M3-10  | M3 | 10,0   | 6,0      | 6,0    | -         | -    | -    | -   | -   | -   | -    | 100 pcs/bulk |
| 096 470 010  | AH-SMIA-M4-1   | M4 | 1,0    | 8,0      | 7,0    | -         | -    | -    | -   | -   | -   | -    | 100 pcs/bulk |
| 096 470 010T | AH-SMIA-M4-1-T | M4 | 1,0    | 8,0      | 7,0    | 24,0      | 11,5 | 9,1  | 6,1 | 6,0 | 8,2 | 20,0 | 300 pcs/reel |
| 096 470 020  | AH-SMIA-M4-2   | M4 | 2,0    | 8,0      | 7,0    | -         | -    | -    | -   | -   | -   | -    | 100 pcs/bulk |
| 096 470 020T | AH-SMIA-M4-2-T | M4 | 2,0    | 8,0      | 7,0    | 24,0      | 11,5 | 10,1 | 6,7 | 6,0 | 8,2 | 20,0 | 300 pcs/reel |
| 096 470 030  | AH-SMIA-M4-3   | M4 | 3,0    | 8,0      | 7,0    | -         | -    | -    | -   | -   | -   | -    | 100 pcs/bulk |
| 096 470 040  | AH-SMIA-M4-4   | M4 | 4,0    | 8,0      | 7,0    | -         | -    | -    | -   | -   | -   | -    | 100 pcs/bulk |
| 096 470 050  | AH-SMIA-M4-5   | M4 | 5,0    | 8,0      | 7,0    | -         | -    | -    | -   | -   | -   | -    | 100 pcs/bulk |
| 096 470 060  | AH-SMIA-M4-6   | M4 | 6,0    | 8,0      | 7,0    | -         | -    | -    | -   | -   | -   | -    | 100 pcs/bulk |
| 096 470 070  | AH-SMIA-M4-7   | M4 | 7,0    | 8,0      | 7,0    | -         | -    | -    | -   | -   | -   | -    | 100 pcs/bulk |
| 096 470 080  | AH-SMIA-M4-8   | M4 | 8,0    | 8,0      | 7,0    | -         | -    | -    | -   | -   | -   | -    | 100 pcs/bulk |
| 096 470 090  | AH-SMIA-M4-9   | M4 | 9,0    | 8,0      | 7,0    | -         | -    | -    | -   | -   | -   | -    | 100 pcs/bulk |
| 096 470 100  | AH-SMIA-M4-10  | M4 | 10,0   | 8,0      | 7,0    | -         | -    | -    | -   | -   | -   | -    | 100 pcs/bulk |



Lötpadempfehlung:

|            | Ø C |
|------------|-----|
| AH-SMIA-M2 | 5   |
| AH-SMIA-M3 | 7   |
| AH-SMIA-M4 | 9   |

